

CAMP SPRINGS ONE DEPARTURE

SL-561 [USAF]

JOINT BASE ANDREWS (KADW)

CAMP SPRINGS, MARYLAND

ATIS 113.1 251.05
 GND CON
 121.8 275.8
 ANDREWS TOWER
 118.4 349.0
 POTOMAC TRACON DEP CON
 118.95 257.2

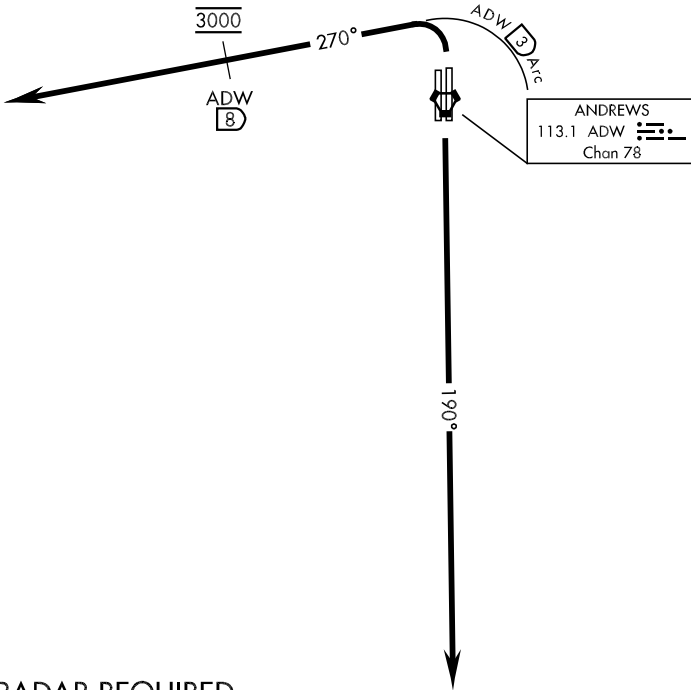
Rwy	Knots	60	120	180	240
1L/1R	V/V(fpm)	380	760	1140	1520

ATC Climb Rate to 3000

If unable to make published climb gradient advise ATC prior to departure.

1149
▲

RADAR VECTORS REQUIRED WITHIN 10 NM FROM DEPARTURE



RADAR REQUIRED



DEPARTURE ROUTE DESCRIPTION

TAKE-OFF RWY 1L/1R: Turn left climb on heading 270° within 3 DME of ADW VORTAC, cross ADW 8 DME at 3000. Expect radar vectors.

TAKE-OFF RWY 19R/19L: Climb on heading 190° to 3000. Expect radar vectors to the west.

CAMP SPRINGS ONE DEPARTURE

CAMP SPRINGS, MARYLAND
JOINT BASE ANDREWS (KADW)

NE-3, 25 JUN 2015 to 23 JUL 2015

NE-3, 25 JUN 2015 to 23 JUL 2015