

SID

JEPPESEN

30 OCT 98

10-3

Eff 5 Nov

FORTALEZA, BRAZIL

PINTO MARTINS INTL

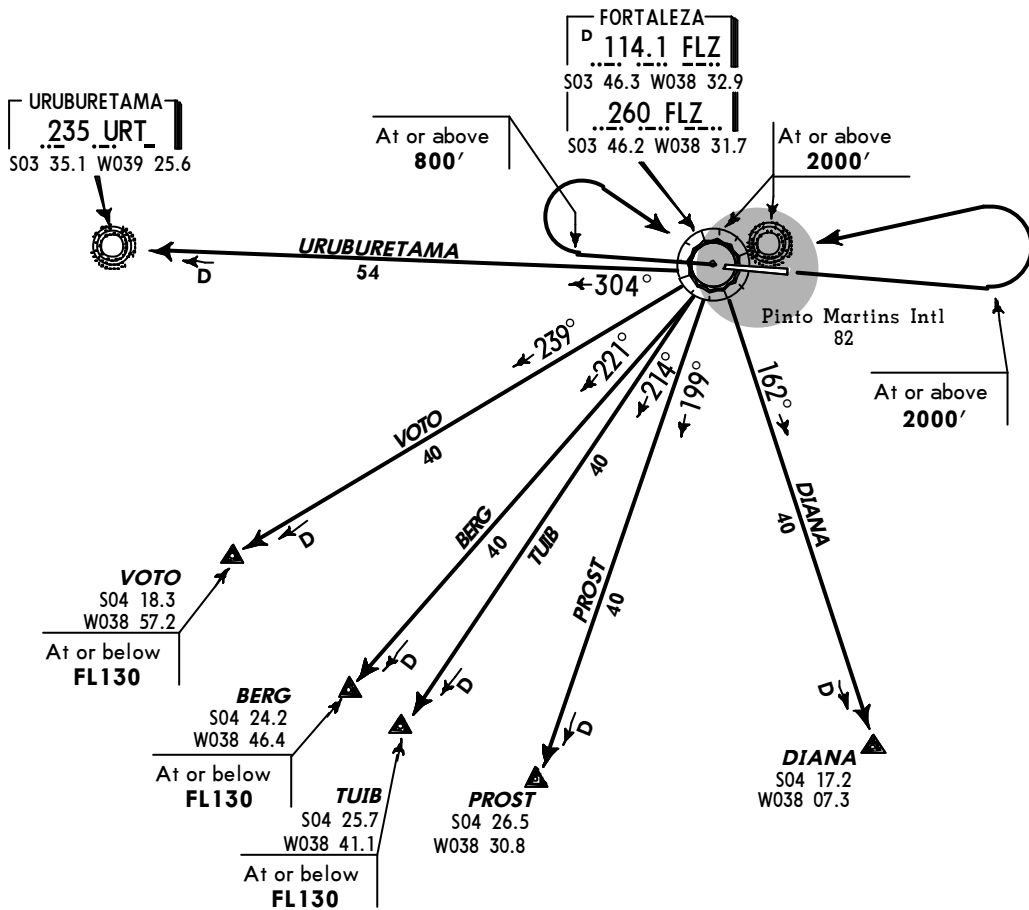
TRANS LEVEL: BY ATC
TRANS ALT: 4000'

BERG, DIANA, PROST, TUIB, URUBURETAMA, VOTO DEPARTURES

These SIDs require the following minimum climb gradient of:

Gnd speed-Kts	75	100	150	200	250	300
3.3% V/V (fpm)	250	350	500	700	850	1000

Be alert for radio antenna 2.4 NM from Rwy 13 threshold.
Minimum altitude to depart FLZ VOR/NDB: 2000'.



SID

JEPPESEN 30 OCT 98 **10-3A** **Eff 5 Nov**

FORTALEZA, BRAZIL
PINTO MARTINS INTL

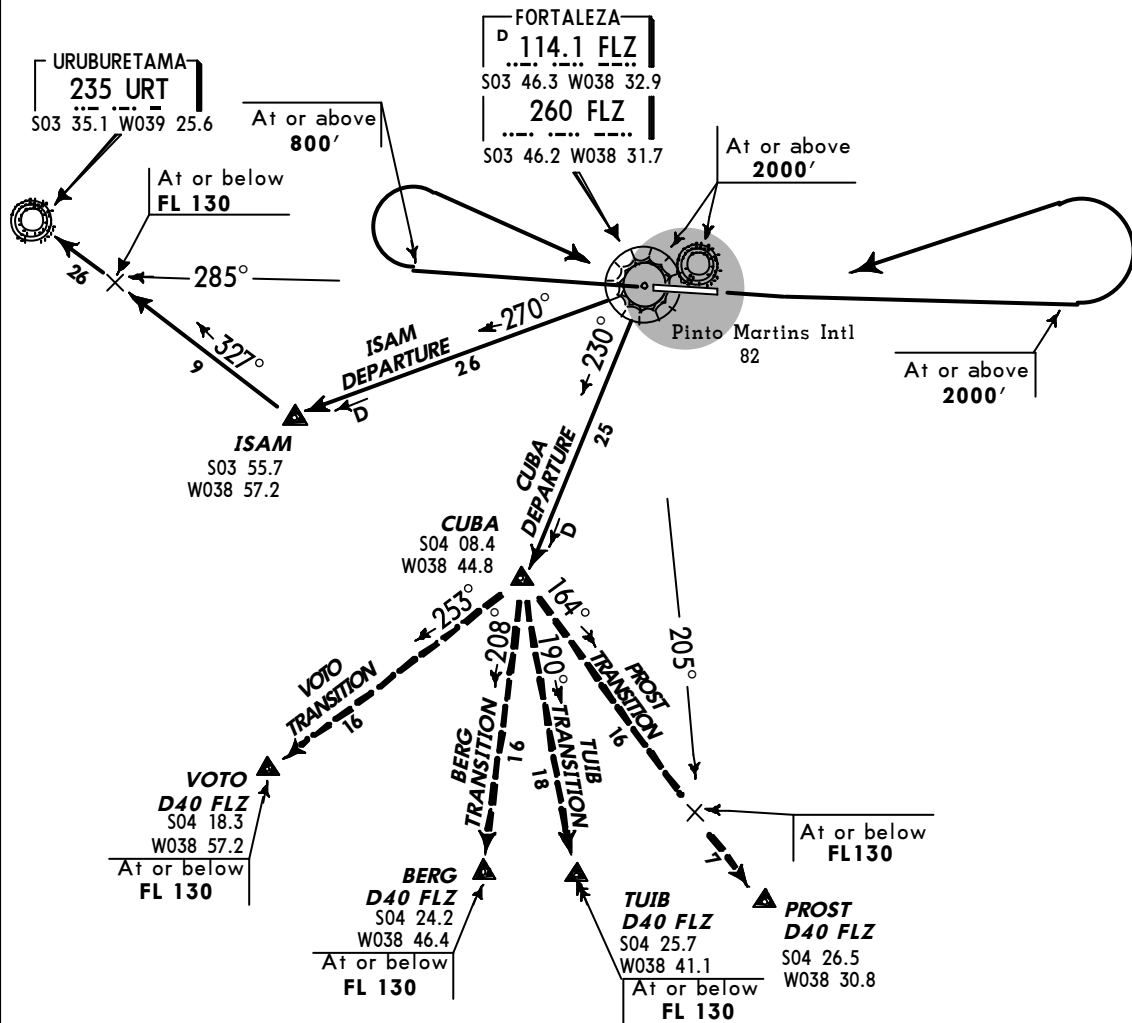
TRANS LEVEL: BY ATC
TRANS ALT: 4000'

CUBA, ISAM DEPARTURES

This SID requires the following minimum climb gradient of:

Gnd speed-Kts	75	100	150	200	250	300
3.3% V/V (fpm)	250	350	500	700	850	1000

Be alert for radio antenna 2.4 NM from Rwy 13 threshold.
Minimum altitude to depart FLZ VOR/NDB: 2000'.



**ATENÇÃO - ESSAS CARTAS SÃO SOMENTE PARA AVIAÇÃO VIRTUAL
NÃO PODEM E NÃO DEVEM SER UTILIZADAS NA AVIAÇÃO REAL**

SID

JEPPESEN 20 DEC 02

10-3B

Eff 26 Dec

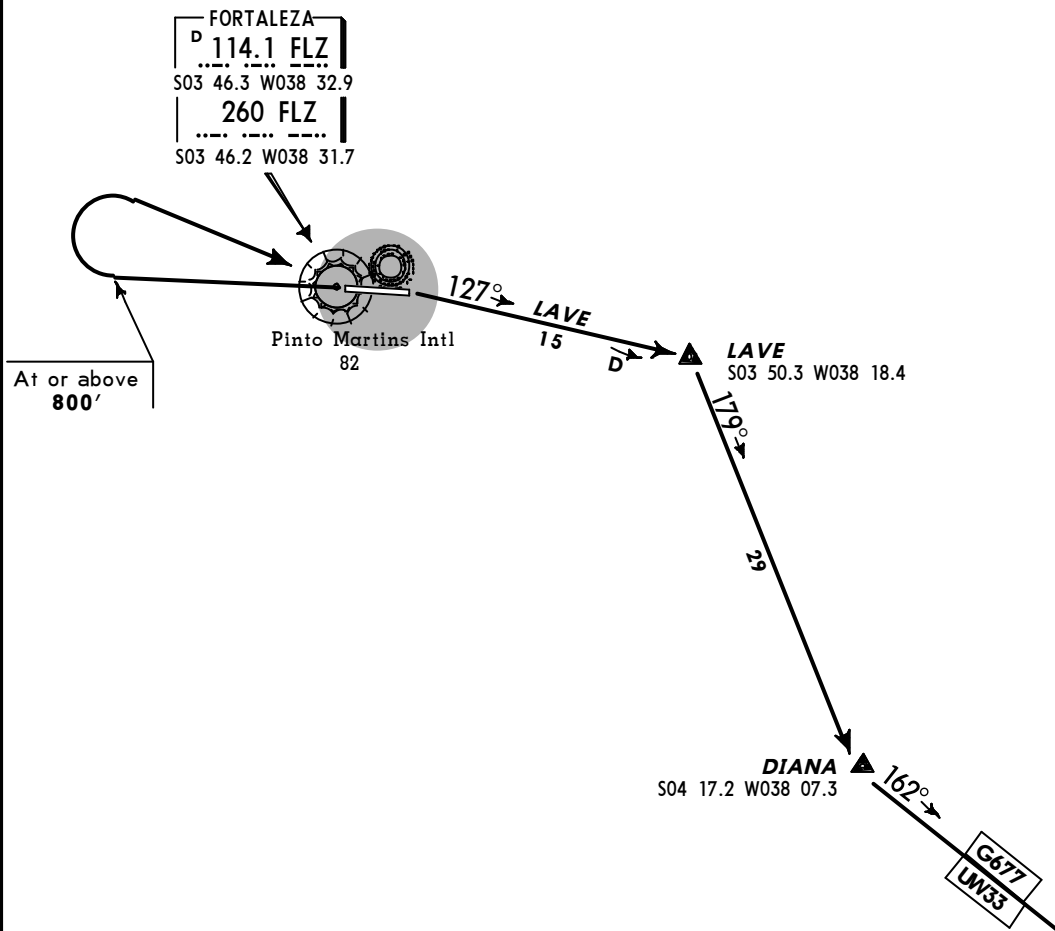
**FORTALEZA, BRAZIL
PINTO MARTINS INTL**

TRANS LEVEL: BY ATC
TRANS ALT: 4000'

LAVE DEPARTURE

This SID requires the following minimum climb gradient of:

Gnd speed-Kts	75	100	150	200	250	300
3.3% V/V (fpm)	250	350	500	700	850	1000



ATENÇÃO - ESSAS CARTAS SÃO SOMENTE PARA AVIAÇÃO VIRTUAL
 NÃO PODEM E NÃO DEVEM SER UTILIZADAS NA AVIAÇÃO REAL

SID

JEPPESEN 20 DEC 02

10-3C

Eff 26 Dec

FORTALEZA, BRAZIL
PINTO MARTINS INTL

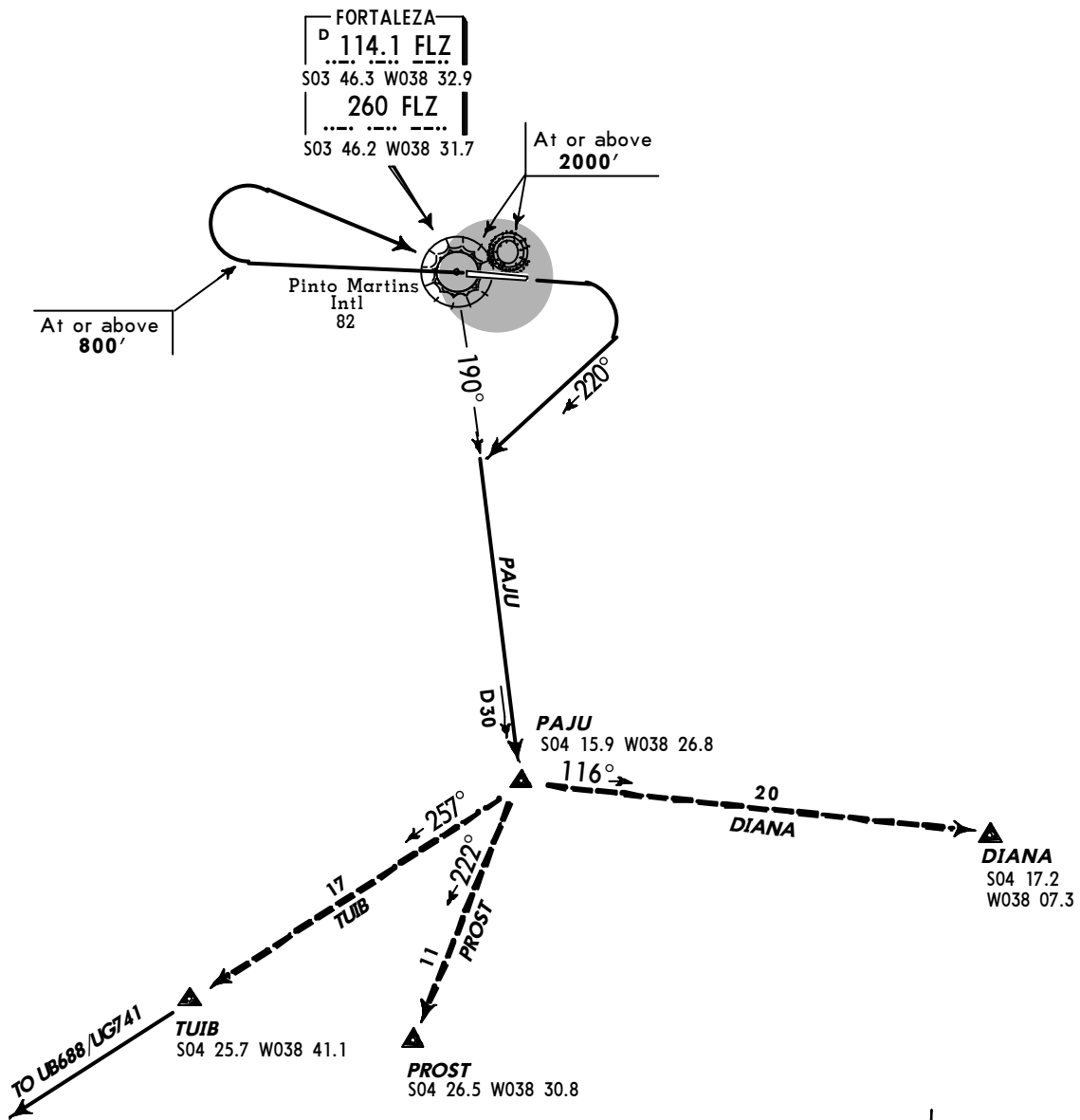
TRANS LEVEL: BY ATC
 TRANS ALT: 4000'

PAJU DEPARTURE

This SID requires the following minimum climb gradient of:

Gnd speed-Kts	75	100	150	200	250	300
3.3% V/V (fpm)	250	350	500	700	850	1000

Be alert for radio antenna 2.4 NM from Rwy 13 threshold.
 Minimum altitude to depart FLZ VOR/NDB: 2000'.



**ATENÇÃO - ESSAS CARTAS SÃO SOMENTE PARA AVIAÇÃO VIRTUAL
NÃO PODEM E NÃO DEVEM SER UTILIZADAS NA AVIAÇÃO REAL**

JEPPESEN

SBFZ/FOR

1 AUG 03

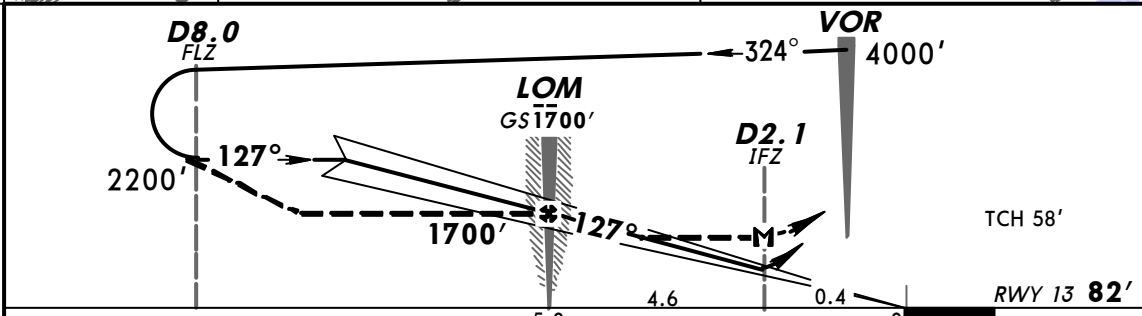
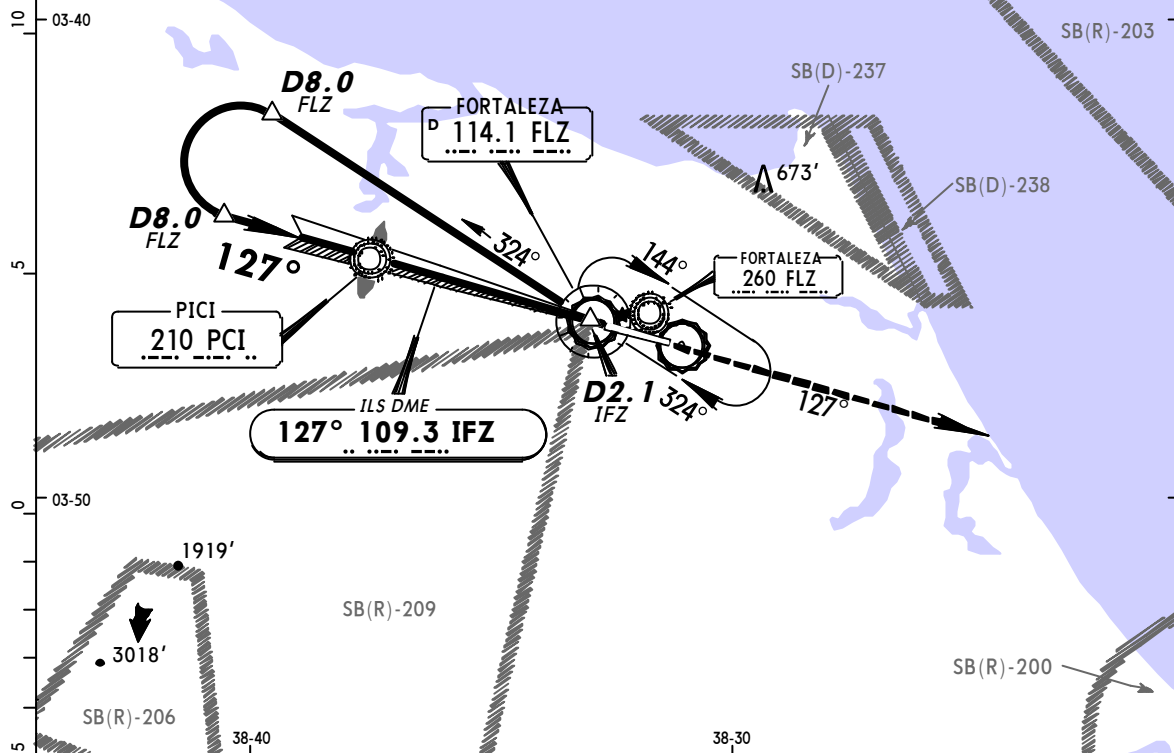
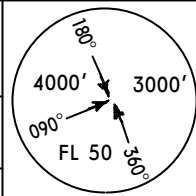
(11-1)

FORTALEZA, BRAZIL

PINTO MARTINS INTL

DESCENT CHARLIE 1 ILS Rwy 13

FORTALEZA Control (Approach) (R)		FORTALEZA Tower		Ground
133.0	134.55	129.0		121.95
LOC IFZ	Final Apch Crs	GS LOM	ILS DA(H)	Apt Elev 82'
109.3	127°	1700' (1618')	290' (208')	RWY 13 82'
MISSED APCH: Climb to 4000' outbound on FLZ VOR R-127.				
Alt Set: hPa	Rwy Elev: 3 hPa	Trans level: By ATC	Trans alt: 4000'	
1. Max IAS outbound 190 Kts.				MSA FLZ VOR



Gnd speed-Kts	90	110	130	150	170	190	ALSF-I PAPI 4000' on FLZ R-127
GS	3.00°	478	584	690	796	902	
Rate of descent on final (feet/min)		500	600	700	850	950	
MAP at D2.1 IFZ or LOM to MAP	4.6	2:52	2:21	1:59	1:43	1:31	

STRAIGHT-IN LANDING RWY3		CEILING REQUIRED	CIRCLE-TO-LAND
ILS DA(H) 290' (208')		LOC (GS out) MDA(H) 430' (348')	
FULL	ALS out	Max Kts	MDA(H) CEIL-VIS
CEILING-VISIBILITY			
A	200' - 1200m	100	780' (698') 700' - 1600m
B		135	800' (718') 800' - 2000m
C		180	980' (898') 900' - 4400m
D		205	980' (898') 900' - 4800m

PANS OPS 3

CHANGES: Approach frequency.

© JEPPESEN SANDERSON, INC., 2001, 2003. ALL RIGHTS RESERVED.

ATENÇÃO - ESSAS CARTAS SÃO SOMENTE PARA AVIAÇÃO VIRTUAL

NÃO PODEM E NÃO DEVEM SER UTILIZADAS NA AVIAÇÃO REAL

JEPPESEN

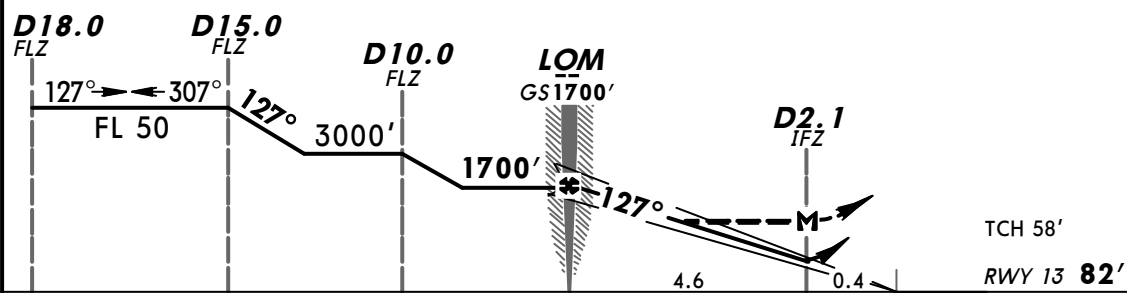
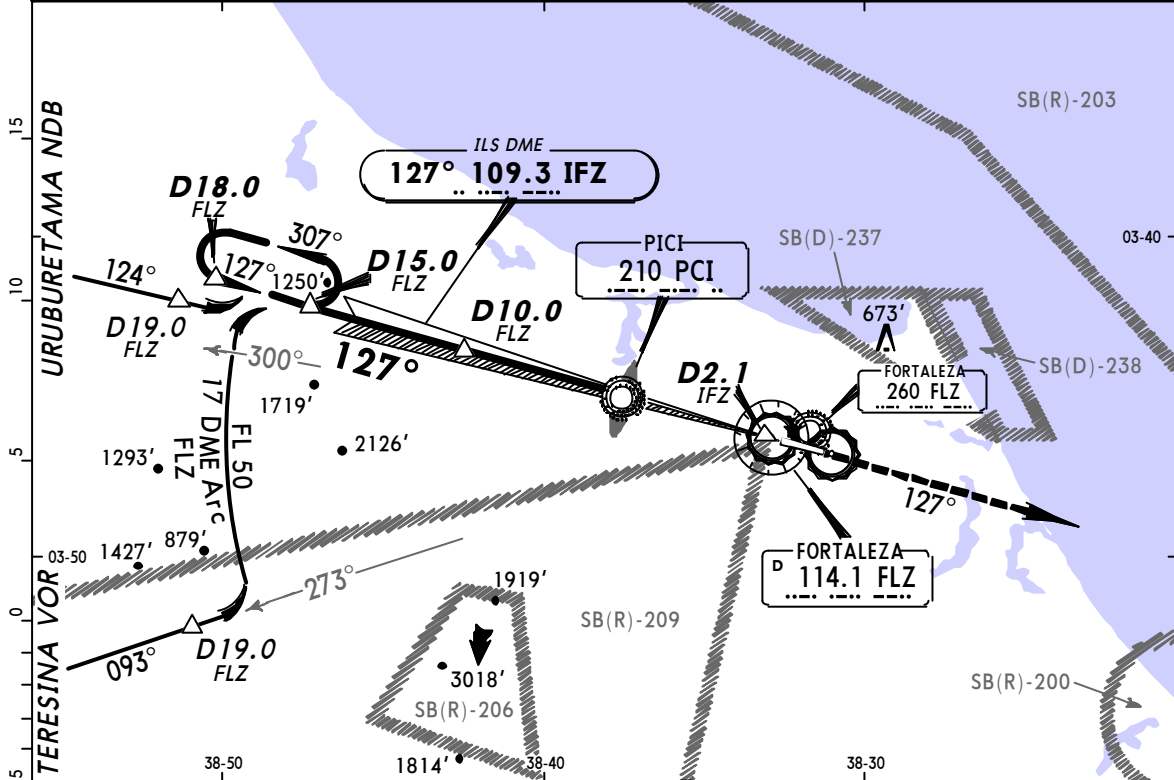
SBFZ/FOR
PINTO MARTINS INTL

1 AUG 03

(11-2)

FORTALEZA, BRAZIL
DESCENT CHARLIE 2 ILS Rwy 13

FORTALEZA Control (Approach) (R)		FORTALEZA Tower		Ground	
133.0 134.55		129.0		121.95	
LOC IFZ	Final Apch Crs	GS LOM	ILS DA(H)	Apt Elev	82'
109.3	127°	1700' (1618')	290' (208')	RWY 13	82'
MISSED APCH: Climb to 4000' outbound on FLZ VOR R-127.					
Alt Set: hPa	Rwy Elev: 3 hPa	Trans level: By ATC	Trans alt: 4000'	MSA FLZ VOR	



Gnd speed-Kts	90	110	130	150	170	190	ALSF-I PAPI 4000' FLZ on R-127
GS	3.00°	478	584	690	796	902	
Rate of descent on final (feet/min)		500	600	700	850	1050	
MAP at D2.1 IFZ or LOM to MAP	4.6	2:52	2:21	1:59	1:43	1:31	

STRAIGHT-IN LANDING RWY3		CEILING REQUIRED		CIRCLE-TO-LAND	
ILS DA(H) 290' (208')		LOC (GS out) MDA(H) 430' (348')			
FULL	ALS out	ALS out	Max Kts	MDA(H)	CEIL-VIS
200' - 1200m			100	780' (698')	700' - 1600m
			135	800' (718')	800' - 2000m
			180	980' (898')	900' - 4400m
			205	980' (898')	900' - 4800m

PANS OPS 3

CHANGES: Approach frequency.

© JEPPESEN SANDERSON, INC., 2001, 2003. ALL RIGHTS RESERVED.

**ATENÇÃO - ESSAS CARTAS SÃO SOMENTE PARA AVIAÇÃO VIRTUAL
NÃO PODEM E NÃO DEVEM SER UTILIZADAS NA AVIAÇÃO REAL**

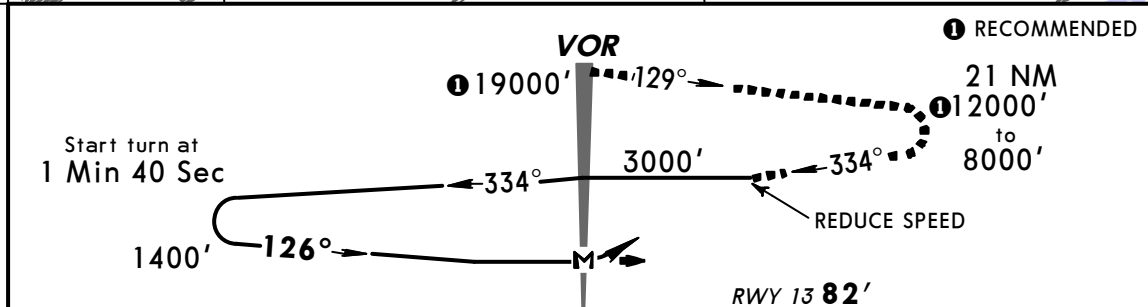
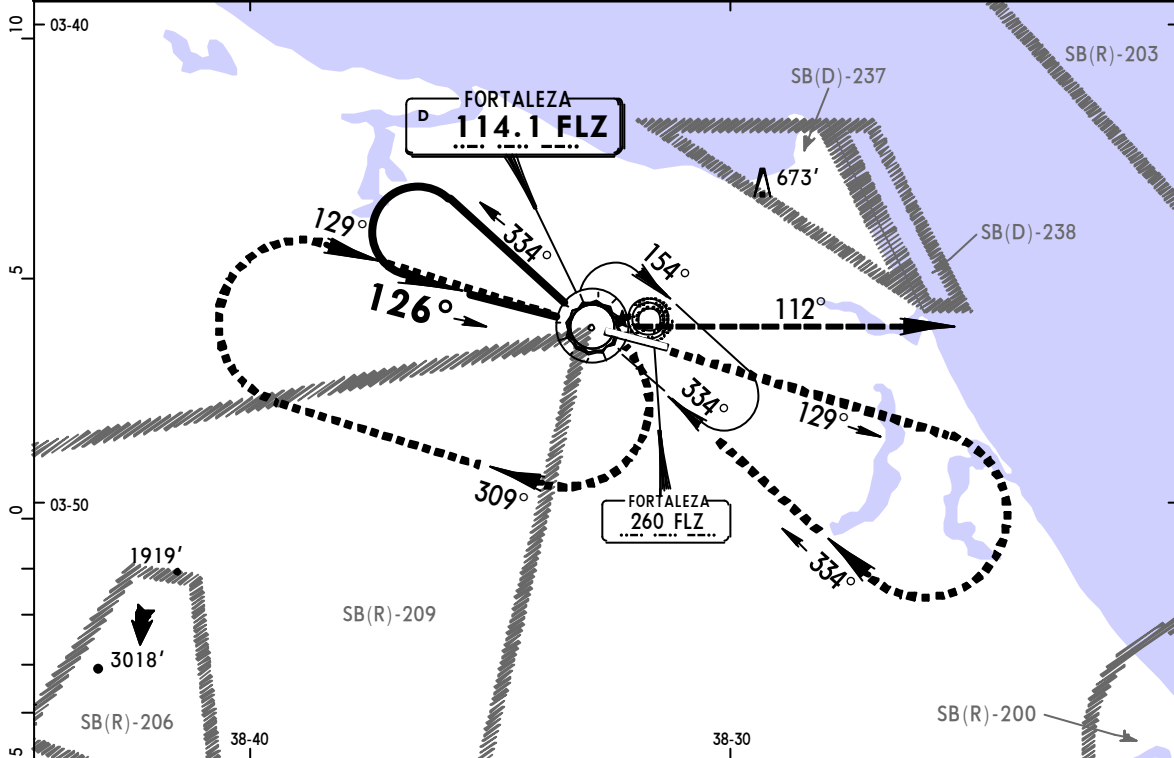
JEPPESEN

SBFZ/FOR
PINTO MARTINS INTL

1 AUG 03 **(13-1)**
CAT A, B & C

FORTALEZA, BRAZIL
DESCENT DELTA 1 VOR Rwy 13

FORTALEZA Control (Approach) (R)		FORTALEZA Tower		Ground		
133.0	134.55	129.0		121.95		
VOR FLZ 114.1	Final Apch Crs 126°	No FAF	MDA(H) 670' (588')	Apt Elev 82'	RWY 13 82'	
MISSED APCH: Climb to 3000' LEFT turn outbound on FLZ VOR R-112.						
Alt Set: hPa		Rwy Elev: 3 hPa	Trans level: By ATC			Trans alt: 4000'
1. Penetration based on 220 Kts IAS, rate of descent 2000'/min. 2. Max IAS outbound 170 Kts.						



Rate of descent on final (feet/min)	700	ALSIF-1	3000'	FLZ 114.1
MAP at VOR		PAPI	LT	on R-112

STRAIGHT-IN LANDING RWY 13		CEILING REQUIRED	CIRCLE-TO-LAND	
MDA(H) 670' (588')				
	ALS out	Max Kts	MDA(H)	CEIL-VIS
A	CEILING-VISIBILITY	100	780' (698')	700'-1600m
B	600'-1600m	135	800' (718')	800'-2000m
C	600'-2400m	180	980' (898')	900'-4400m
D	NA	D	NA	

CHANGES: Approach frequency.

© JEPPESEN SANDERSON, INC., 2001, 2003. ALL RIGHTS RESERVED.

**ATENÇÃO - ESSAS CARTAS SÃO SOMENTE PARA AVIAÇÃO VIRTUAL
NÃO PODEM E NÃO DEVEM SER UTILIZADAS NA AVIAÇÃO REAL**

SBFZ/FOR

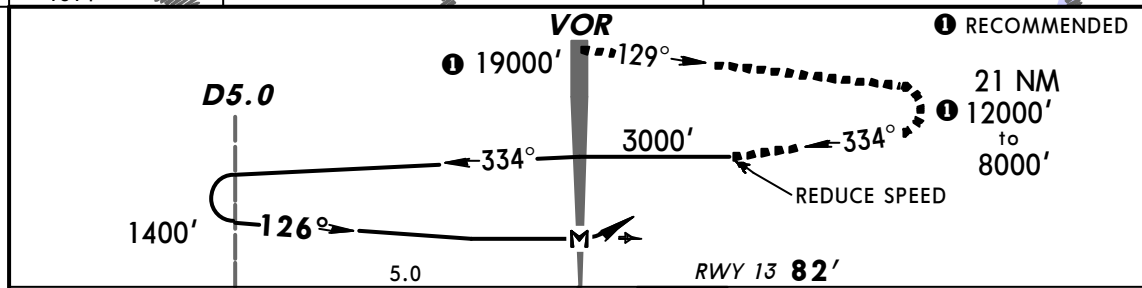
JEPPESEN

**FORTALEZA, BRAZIL
DESCENT DELTA 2
VOR DME Rwy 13**

PINTO MARTINS INTL

1 AUG 03 **(13-2)**

FORTALEZA Control (Approach) (R)		FORTALEZA Tower		Ground
133.0	134.55	129.0		121.95
VOR FLZ 114.1	Final Apch Crs 126°	No FAF	MDA(H) 670' (588')	Apt Elev 82' RWY 13 82'
MISSED APCH: Climb to 3000' LEFT turn outbound on FLZ VOR R-112.				
Alt Set: hPa Rwy Elev: 3 hPa Trans level: By ATC Trans alt: 4000'				
1. Penetration based on 220 Kts IAS rate of descent 2000'/min.				MSA FLZ VOR



Gnd speed-Kts	90	110	130	150	170	190	ALSF-I	3000'	LT	FLZ on 114.1
Rate of descent on final (feet/min)		400	500	650	700		PAPI			R-112
MAP at VOR										

STRAIGHT-IN LANDING RWY13		CEILING REQUIRED	CIRCLE-TO-LAND	
MDA(H) 670' (588')				
	ALS out	Max Kts	MDA(H)	CEIL-VIS
A	CEILING-VISIBILITY	100	780' (698')	700' - 1600m
B	600' - 1600m	135	800' (718')	800' - 2000m
C	600' - 2400m	180	980' (898')	900' - 4400m
D	600' - 2800m	205	980' (898')	900' - 4800m

CHANGES: Approach frequency.

© JEPPESEN SANDERSON, INC., 2002, 2003. ALL RIGHTS RESERVED.

**ATENÇÃO - ESSAS CARTAS SÃO SOMENTE PARA AVIAÇÃO VIRTUAL
NÃO PODEM E NÃO DEVEM SER UTILIZADAS NA AVIAÇÃO REAL**

SBFZ/FOR

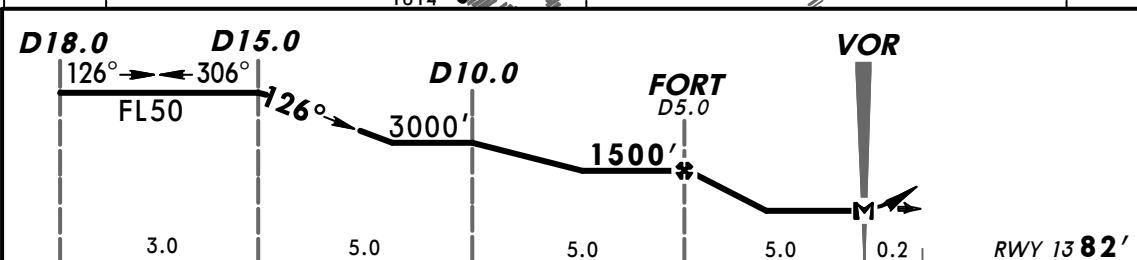
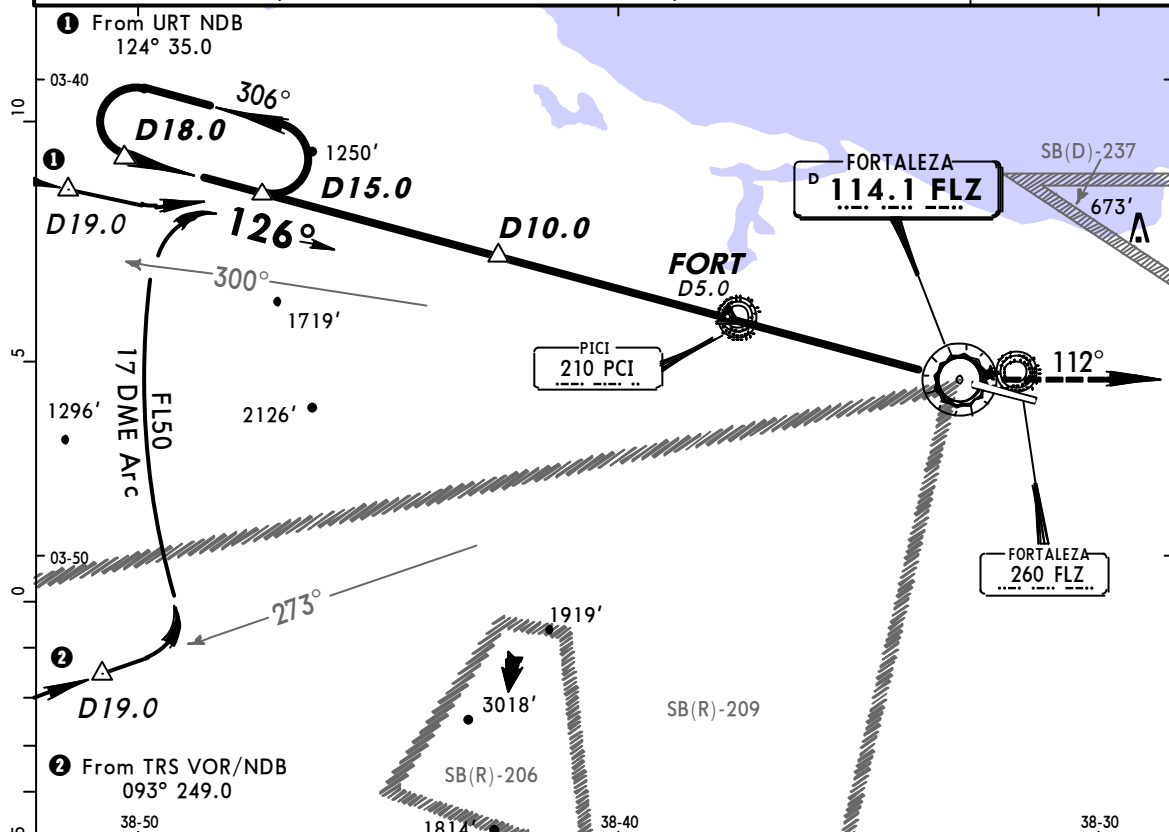
JEPPESEN

**FORTALEZA, BRAZIL
DESCENT DELTA 5
VOR DME Rwy 13**

PINTO MARTINS INTL

1 AUG 03 **(13-3)**

FORTALEZA Control (Approach) (R)		FORTALEZA Tower		Ground
133.0	134.55	129.0		121.95
VOR FLZ 114.1	Final Apch Crs 126°	Minimum Alt FORT 1500' (1418')	MDA(H) 670' (588')	Apt Elev 82' RWY 13 82'
MISSED APCH: Climb to 3000' LEFT turn outbound on FLZ VOR R-112.				
Alt Set: hPa	Rwy Elev: 3 hPa	Trans level: By ATC	Trans alt: 4000'	MSA FLZ VOR



Gnd speed-Kts	90	110	130	150	170	190	ALSIF-1	3000'	FLZ
Rate of descent on final (feet/min)	450	550	650	750	850	950	PAPI	↑	on 114.1
MAP at VOR									R-112

STRAIGHT-IN LANDING RWY 13		CEILING REQUIRED		CIRCLE-TO-LAND	
MDA(H) 670' (588')		ALS out		Max Kts	MDA(H) CEIL-VIS
A	CEILING-VISIBILITY			100	780' (698') 700'-1600m
B	600' -1600m			135	800' (718') 800'-2000m
C	600' -2400m			180	980' (898') 900'-4400m
D	600' -2800m			205	980' (898') 900'-4800m

CHANGES: Approach frequency.

© JEPPESEN SANDERSON, INC., 2002, 2003. ALL RIGHTS RESERVED.

**ATENÇÃO - ESSAS CARTAS SÃO SOMENTE PARA AVIAÇÃO VIRTUAL
NÃO PODEM E NÃO DEVEM SER UTILIZADAS NA AVIAÇÃO REAL**

SBFZ/FOR

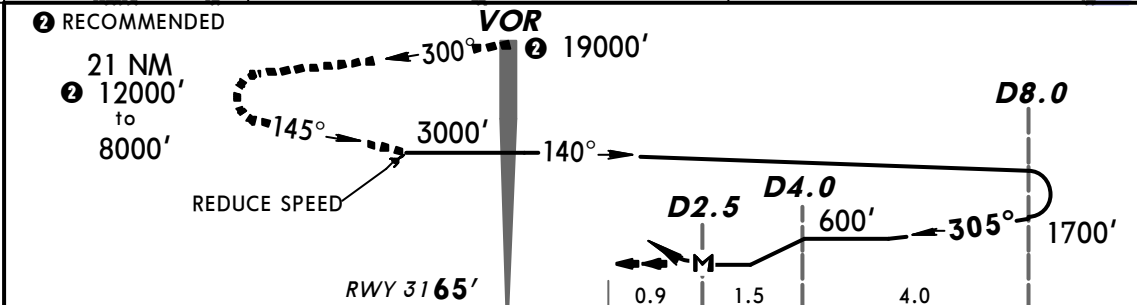
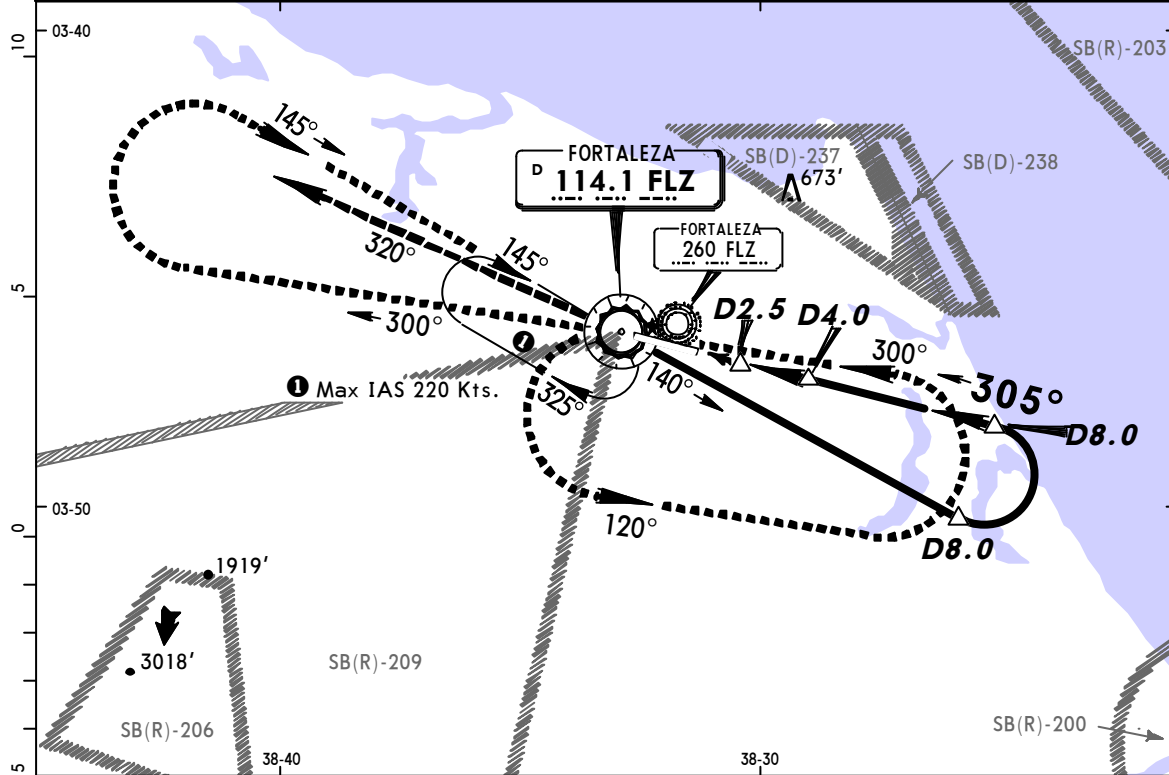
JEPPESEN

**FORTALEZA, BRAZIL
DESCENT DELTA 3
VOR DME Rwy 31**

PINTO MARTINS INTL

1 AUG 03 **(13-4)**

FORTALEZA Control (Approach) (R)		FORTALEZA Tower		Ground	
133.0 134.55		129.0		121.95	
VOR FLZ 114.1	Final Apch Crs 305°	No FAF	MDA(H) (CONDITIONAL) 450' (385')	Apt Elev 82'	
MISSED APCH: Climb to 3000' then RIGHT turn outbound on FLZ VOR R-320.				RWY 31 65'	
Alt Set: hPa Apt Elev: 3 hPa Trans level: By ATC Trans alt: 4000'					
1. Penetration based on 220 Kts IAS, rate of descent 2000'/min. 2. Coordinate with Approach Control to execute procedure.					



Gnd speed-Kts	110	130	150	170	190	210	3000' ↑ RT on FLZ 114.1 R-320
Rate of descent on final (feet/min)	550	650	750	850	950	1050	
MAP at D2.5							

STRAIGHT-IN LANDING RWY 31		CEILING REQUIRED		CIRCLE-TO-LAND	
VOR DME MDA(H) 450' (385')		VOR MDA(H) 600' (535')		Max Kts	MDA(H) — CEIL-VIS
CEILING-VISIBILITY		CEILING-VISIBILITY			
A	500' - 1600m	600' - 1600m		100	780' (698') 700' - 1600m
B		600' - 2400m		135	800' (718') 800' - 2000m
C		600' - 2800m		180	980' (898') 900' - 4400m
D		600' - 2800m		205	980' (898') 900' - 4800m

CHANGES: Approach frequency.

© JEPPESEN SANDERSON, INC., 2002, 2003. ALL RIGHTS RESERVED.

PANS OPS 3

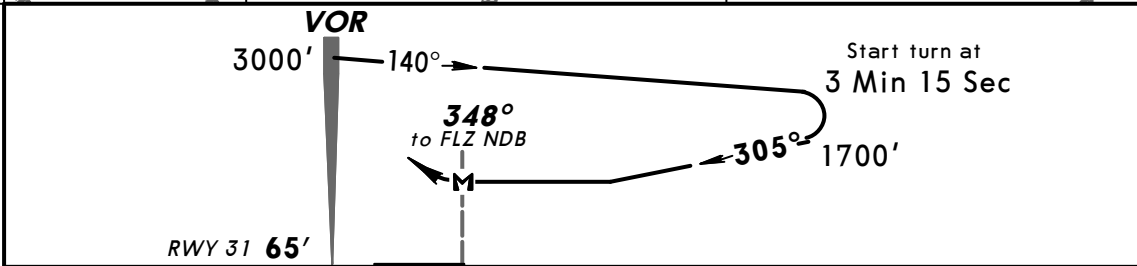
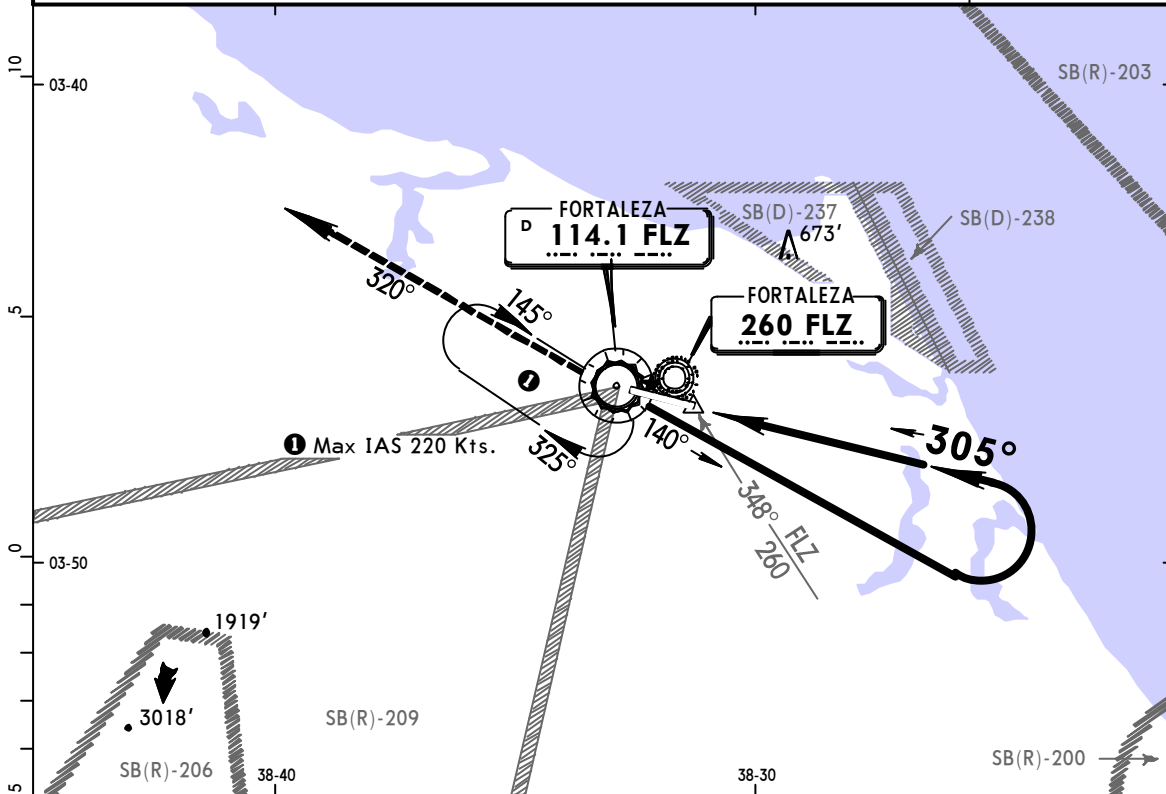
**ATENÇÃO - ESSAS CARTAS SÃO SOMENTE PARA AVIAÇÃO VIRTUAL
NÃO PODEM E NÃO DEVEM SER UTILIZADAS NA AVIAÇÃO REAL**

SBFZ/FOR
PINTO MARTINS INTL

JEPPESEN
1 AUG 03 **(13-5)**

FORTALEZA, BRAZIL
DESCENT DELTA 4
VOR NDB DME Rwy 31

BRIEFING STRIP™	FORTALEZA Control (Approach) (R)		FORTALEZA Tower		Ground
	133.0	134.55	129.0		121.95
	VOR FLZ 114.1	Final Apch Crs 305°	No FAF	MDA(H) 600' (535')	Apt Elev 82'
NDB FLZ 260				RWY 31 65'	
MISSED APCH: Climb to 3000' then RIGHT turn outbound on FLZ VOR R-320.					
Alt Set: hPa		Apt Elev: 3 hPa	Trans level: By ATC		Trans alt: 4000'
1. Coordinate with Approach Control to execute procedure.					MSA FLZ VOR



Gnd speed-Kts	90	110	130	150	170	190	3000'	RT on 114.1 R-320
Rate of descent on final (feet/min)	800							
MAP at 348° to FLZ NDB								

STRAIGHT-IN LANDING RWY 31		CEILING REQUIRED		CIRCLE-TO-LAND	
MDA(H) 600' (535')				Max Kts	MDA(H) CEIL-VIS
A	CEILING-VISIBILITY		100	780' (698')	700'-1600m
B	600' - 1600m		135	800' (718')	800'-2000m
C	600' - 2400m		180	980' (898')	980'-4400m
D	600' - 2800m		205	980' (898')	980'-4800m

PANS OPS 3

CHANGES: Approach frequency.

© JEPPESEN SANDERSON, INC., 2002, 2003. ALL RIGHTS RESERVED.

**ATENÇÃO - ESSAS CARTAS SÃO SOMENTE PARA AVIAÇÃO VIRTUAL
NÃO PODEM E NÃO DEVEM SER UTILIZADAS NA AVIAÇÃO REAL**

SBFZ/FOR

JEPPESEN

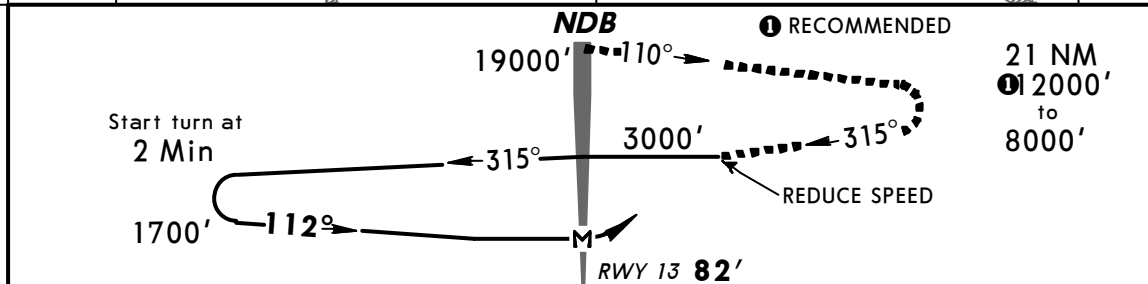
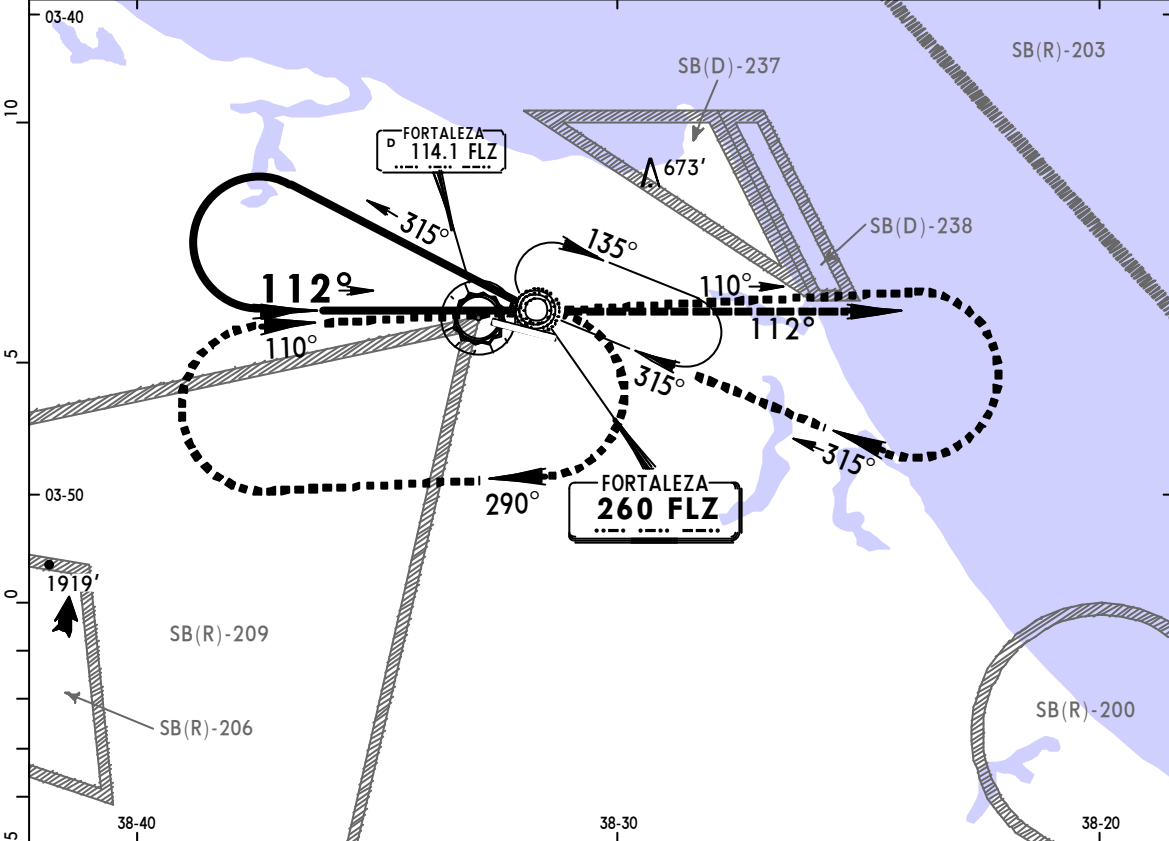
FORTALEZA, BRAZIL

1 AUG 03 (16-1)

PINTO MARTINS INTL

CAT A, B & C DESCENT ECHO 1 NDB Rwy 13

FORTALEZA Control (Approach) (R)		FORTALEZA Tower		Ground
133.0	134.55	129.0		121.95
NDB FLZ 260	Final Apch Crs 112°	No FAF	MDA(H) 670' (588')	Apt Elev 82' RWY 13 82'
MISSED APCH: Climb to 3000' on 112° bearing from FLZ NDB.				<p>MSA FLZ NDB</p>
Alt Set: hPa Rwy Elev: 3 hPa Trans level: By ATC Trans alt: 4000' 1. Penetration based on 220 Kts IAS, rate of descent 2000'/min. 2. Maximum IAS outbound 170 Kts.				



Rate of descent on final (feet/min)	800	ALS F-I	3000'	FLZ
MAP at NDB		PAPI	↑	260
				112°

STRAIGHT-IN LANDING RWY 13		CEILING REQUIRED	CIRCLE-TO-LAND	
MDA(H) 670' (588')				
	ALS out	Max Kts	MDA(H)	CEIL-VIS
A	600' - 1600m	100	780' (698')	700' - 1600m
B	600' - 1600m	135	800' (718')	800' - 2000m
C	600' - 2400m	180	980' (898')	900' - 4400m
D	NA	D	NA	NA

CHANGES: Approach frequency.

© JEPPESEN SANDERSON, INC., 2002, 2003. ALL RIGHTS RESERVED.

ATENÇÃO - ESSAS CARTAS SÃO SOMENTE PARA AVIAÇÃO VIRTUAL

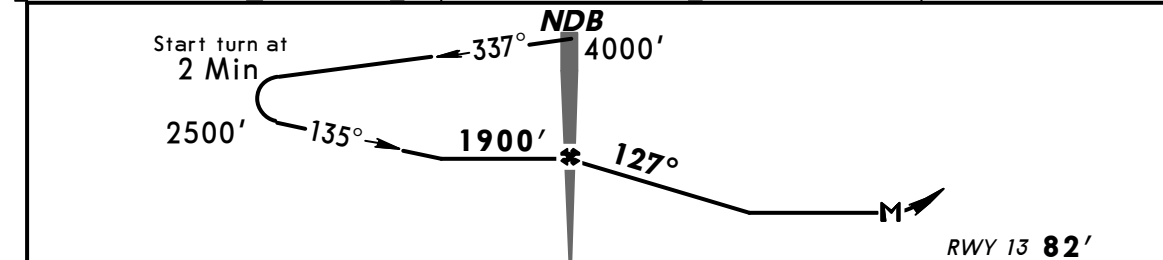
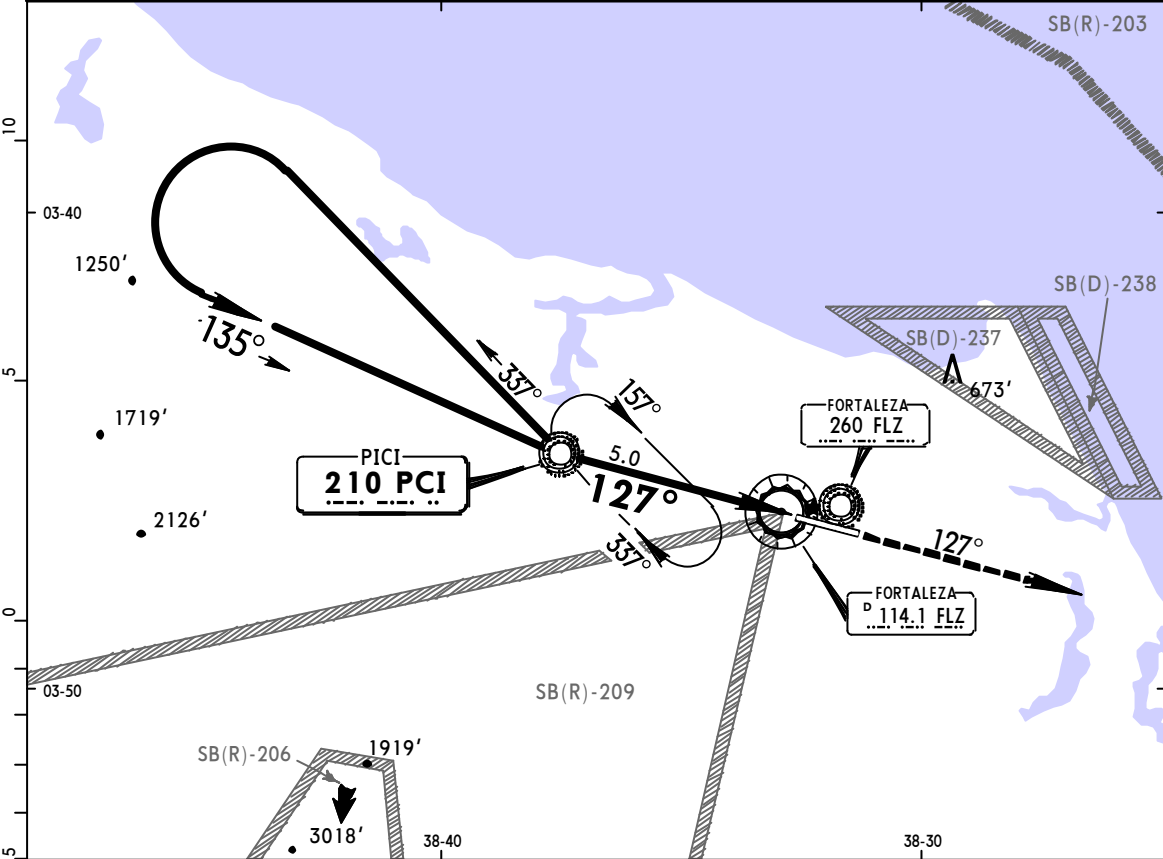
NÃO PODEM E NÃO DEVEM SER UTILIZADAS NA AVIAÇÃO REAL

SBFZ/FOR
PINTO MARTINS INTL

JEPPESSEN
1 AUG 03 (16-2)

FORTALEZA, BRAZIL
DESCENT ECHO 2 NDB Rwy 13

FORTALEZA Control (Approach) (R)		FORTALEZA Tower			Ground	
133.0 134.55		129.0			121.95	
NDB PCI 210	Final Apch Crs 127°	Minimum Alt NDB 1900' (1818')	MDA(H) 670' (588')	Apt Elev 82'	RWY 13 82'	
MISSED APCH: Climb to 4000' on 127° bearing from PCI NDB.						
Alt Set: hPa Rwy Elev: 3 hPa 1. Maximum IAS outbound 190 Kts.		Trans level: By ATC		Trans alt: 4000'		



Gnd speed-Kts	90	110	130	150	170	190	
Rate of descent on final (feet/min)	500	550	800	900	1050	1200	
NDB to MAP	5.0	3:13	2:38	2:14	1:56	1:31	

STRAIGHT-IN LANDING RWY 13		CEILING REQUIRED		CIRCLE-TO-LAND	
MDA(H) 670' (588')					
	CEILING-VISIBILITY	ALS out	Max Kts	MDA(H)	CEIL-VIS
A	600' - 1600m		100	780' (698')	700' - 1600m
B	600' - 1600m		135	800' (718')	800' - 2000m
C	600' - 2400m		180	980' (898')	900' - 4400m
D	600' - 2800m		205	980' (898')	900' - 4800m

CHANGES: Approach frequency.

© JEPPESSEN SANDERSON, INC., 2002, 2003. ALL RIGHTS RESERVED.

**ATENÇÃO - ESSAS CARTAS SÃO SOMENTE PARA AVIAÇÃO VIRTUAL
NÃO PODEM E NÃO DEVEM SER UTILIZADAS NA AVIAÇÃO REAL**

SBFZ/FOR

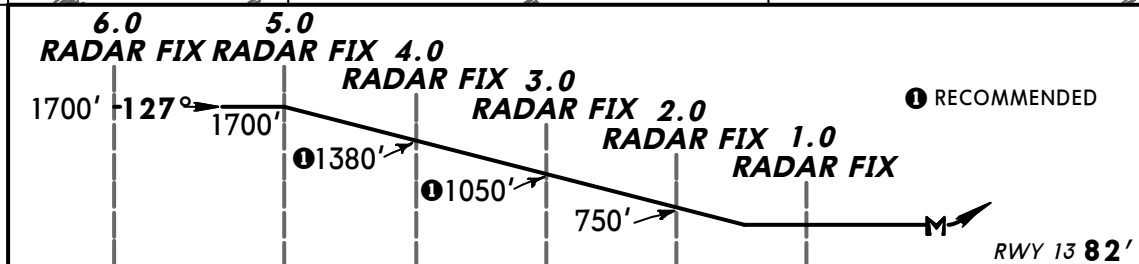
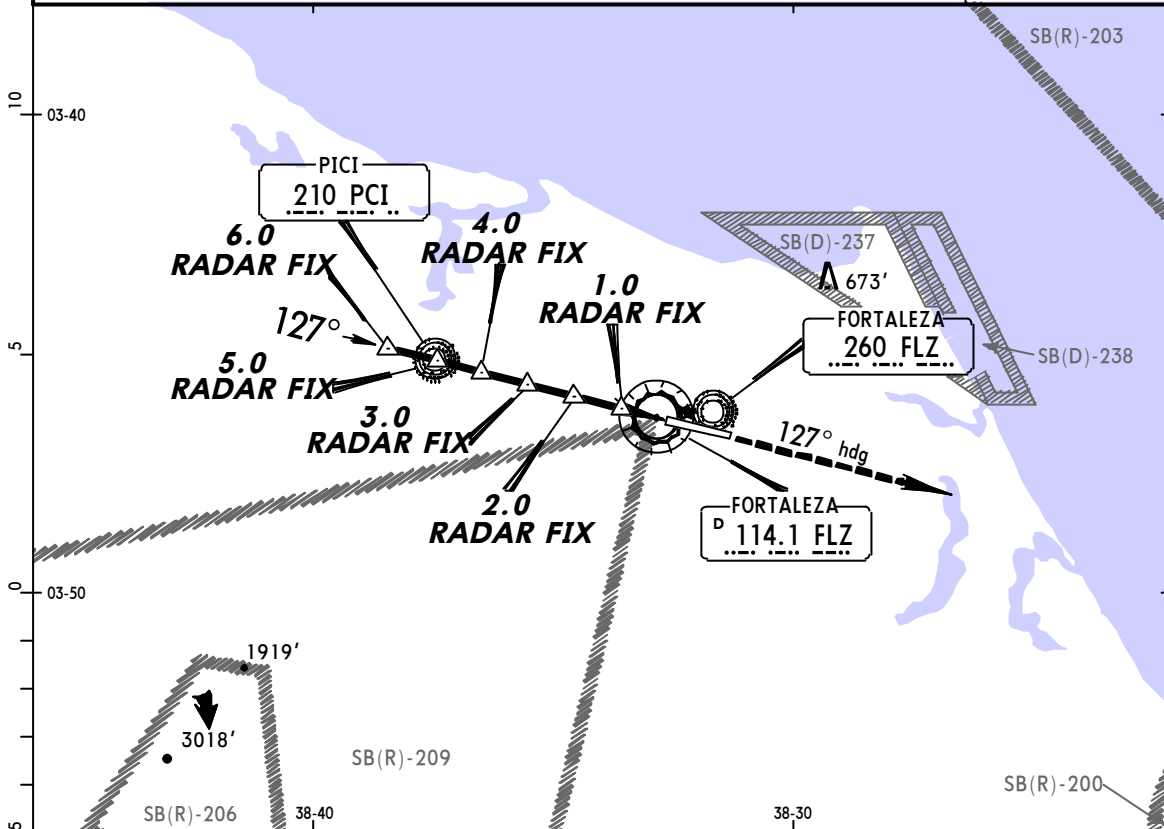
JEPPESEN

**FORTALEZA, BRAZIL
DESCENT BRAVO 1
RADAR ASR Rwy 13**

PINTO MARTINS INTL

1 AUG 03 (18-1)

FORTALEZA Control (Approach) (R)		FORTALEZA Tower		Ground	
133.0 134.55		129.0		121.95	
RADAR	Final Apch Crs 127°	Minimum Alt No FAF	MDA(H) 610' (528')	Apt Elev 82' RWY 13 82'	No MSA Published
MISSED APCH: Climb to 3000' on a 127° heading.					
Alt Set: hPa	Rwy Elev: 3 hPa	Trans level: By ATC		Trans alt: 4000'	



Gnd speed-Kts	90	110	130	150	170	190	ALSIF-I PAPI	3000' on 127° ↑ hdg
Rate of descent on final (feet/min)	550	650	750	850	950	1100		

STRAIGHT-IN LANDING		CEILING REQUIRED	CIRCLE-TO-LAND	
ASR 13			MDA(H)	CEIL-VIS
MDA(H) 610' (528')				
	CEILING-VISIBILITY	Max Kts	MDA(H)	CEIL-VIS
A	600' - 1600m	100	780' (698')	700' - 1600m
B	600' - 1600m	135	800' (718')	800' - 2000m
C	600' - 2400m	180	980' (898')	900' - 4400m
D	600' - 2800m	205	980' (898')	900' - 4800m

CHANGES: Approach frequency.

© JEPPESEN SANDERSON, INC., 2002, 2003. ALL RIGHTS RESERVED.

**ATENÇÃO - ESSAS CARTAS SÃO SOMENTE PARA AVIAÇÃO VIRTUAL
NÃO PODEM E NÃO DEVEM SER UTILIZADAS NA AVIAÇÃO REAL**

SBFZ/FOR

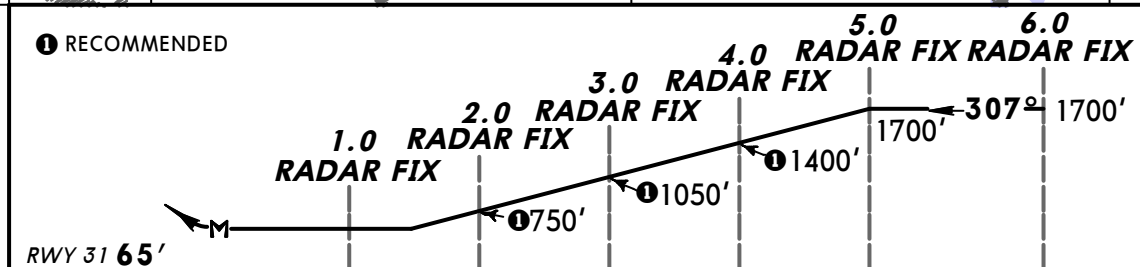
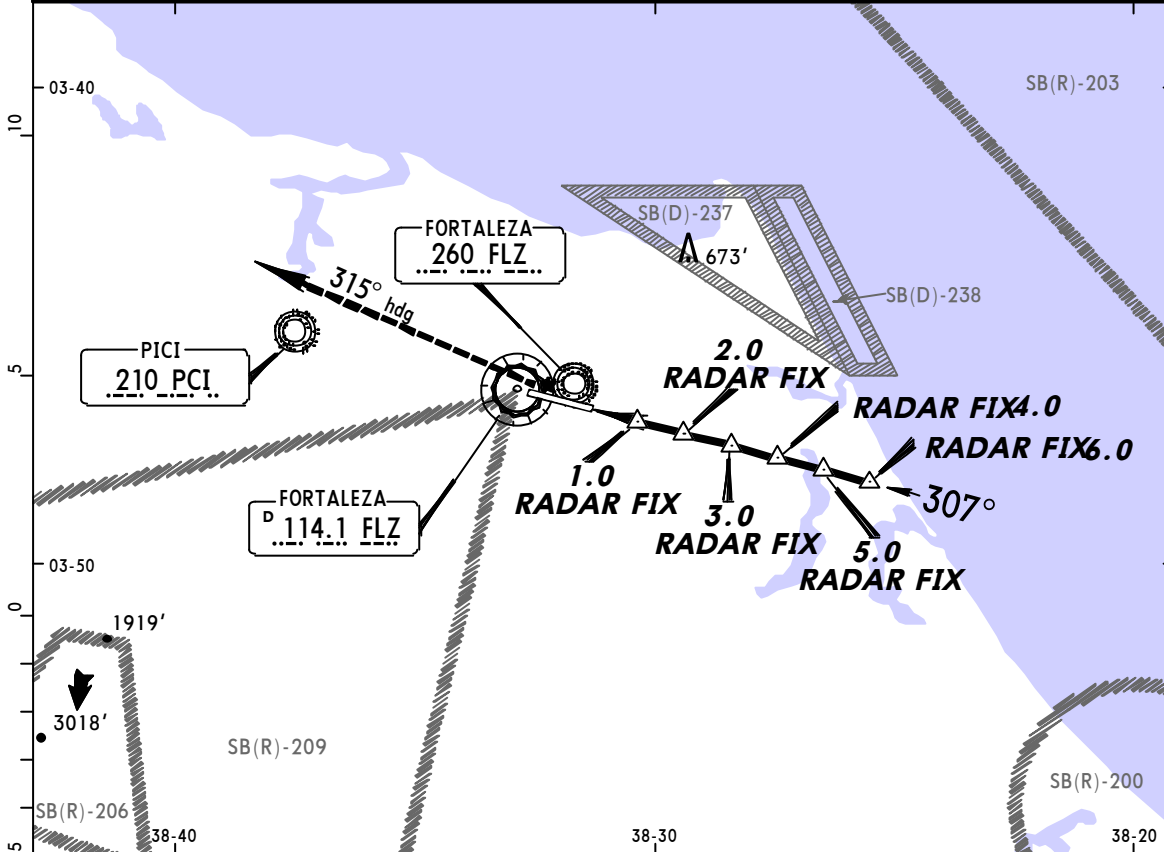
JEPPESEN

**FORTALEZA, BRAZIL
DESCENT BRAVO 2
RADAR ASR Rwy 31**

PINTO MARTINS INTL

1 AUG 03 (18-2)

FORTALEZA Control (Approach) (R)		FORTALEZA Tower		Ground	
133.0 134.55		129.0		121.95	
RADAR	Final Apch Crs 307°	No FAF	MDA(H) 520' (455')	Apt Elev 82' RWY 31 65'	No MSA Published
MISSED APCH: Climb to 3000' on a 315° heading.					
Alt Set: hPa	Rwy Elev: 2 hPa	Trans level: By ATC	Trans alt: 4000'		



Gnd speed-Kts	90	110	130	150	170	190	3000' on 315° ↑ hdg
Rate of descent on final (feet/min)	550	650	750	850	950	1100	

STRAIGHT-IN LANDING		CEILING REQUIRED	CIRCLE-TO-LAND	
ASR 31				
MDA(H) 520' (455')				
CEILING-VISIBILITY				
A	550' - 1600m	Max Kts 100	MDA(H) 780' (698')	CEIL-VIS 700' - 1600m
B	550' - 1600m	135	800' (718')	800' - 2000m
C	550' - 2000m	180	980' (898')	900' - 4400m
D	550' - 2400m	205	980' (898')	900' - 4800m

CHANGES: Approach frequency.

© JEPPESEN SANDERSON, INC., 2002, 2003. ALL RIGHTS RESERVED.

